

# Gorringe Park Primary School - Hall change of use and refurbishment



The existing hall was dark and dingy. An old library structure dominated the space.

A newly proposed hall was needed as both a dining area and as a flexible working environment

**Before**



Lightweight screens help to reduce noise levels and provide a flexible way of rearranging the space.

Stacking tables and chairs give a 'bistro' feel to the hall



Custom design pendants and uplighters provide separately switched and flexible mood lighting



Specially commissioned graphics add the finishing touches



Soft informal quiet reading area replaces old library

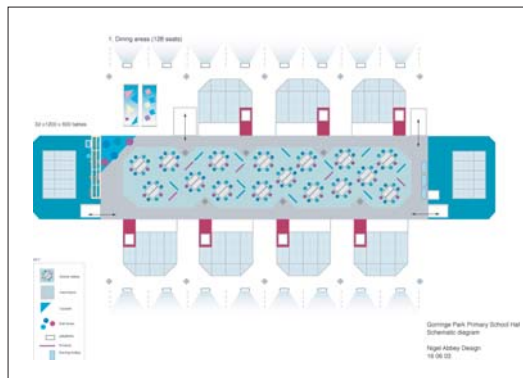


Sunken power points in the floor allow for a flexible working environment

Hard wearing vinyl flooring sets out working areas and delineates 'pathways' and clear access to classrooms



An artist's impression and the final result show remarkable similarity



Space planning was critical in order to accommodate 128 children per sitting.



DESIGN CONSULTANTS